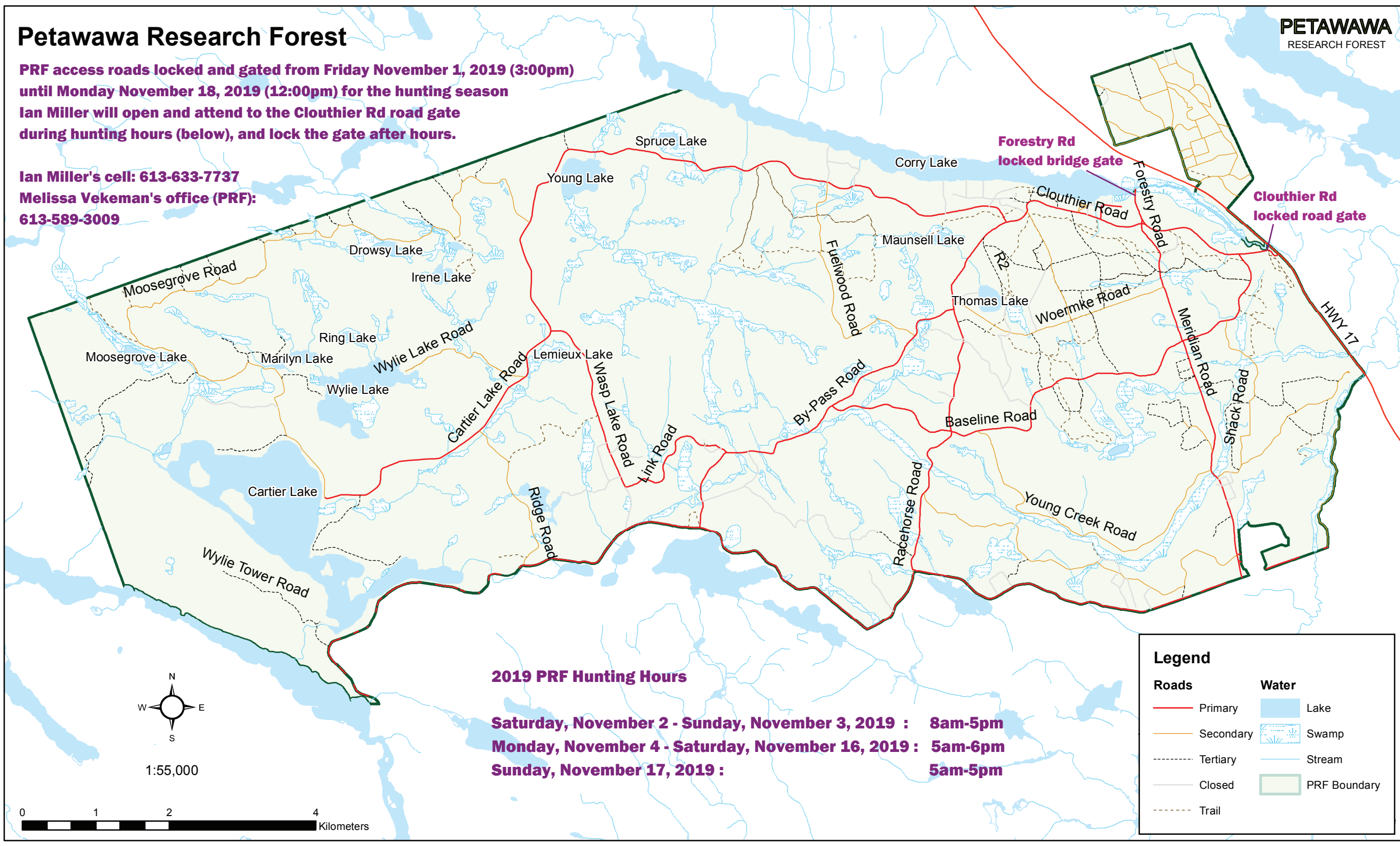


Petawawa Research Forest

PRF access roads locked and gated from Friday November 1, 2019 (3:00pm) until Monday November 18, 2019 (12:00pm) for the hunting season
Ian Miller will open and attend to the Clouthier Rd road gate during hunting hours (below), and lock the gate after hours.

Ian Miller's cell: 613-633-7737
Melissa Vekeman's office (PRF): 613-589-3009



Forestry Rd locked bridge gate

Clouthier Rd locked road gate

2019 PRF Hunting Hours

Saturday, November 2 - Sunday, November 3, 2019 : 8am-5pm

Monday, November 4 - Saturday, November 16, 2019 : 5am-6pm

Sunday, November 17, 2019 : 5am-5pm

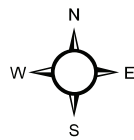
Legend

Roads

- Primary
- Secondary
- - - Tertiary
- Closed
- - - Trail

Water

- Lake
- ▨ Swamp
- Stream
- PRF Boundary



1:55,000

