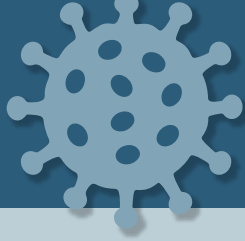




# NOTICE

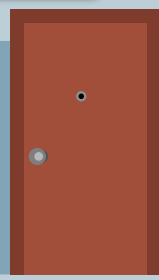
# COVID-19



## WHEN YOU CALL 9-1-1



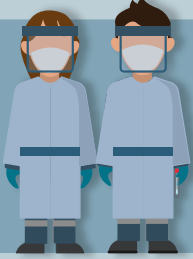
Paramedics will arrive and conduct a 2m assessment



Please do not approach them!



Using the provincial COVID-19 assessment tool, paramedics will ask a series of questions



Paramedics will determine what level of personal protective equipment they require based on your response to their questions



Please be truthful to paramedics about your symptoms

**We are here to help. Help us, help you.**



County of  
**Renfrew**  
Ontario . Canada

[www.countyofrenfrew.on.ca](http://www.countyofrenfrew.on.ca)

