



CORPORATION OF THE

Town of Laurentian Hills

34465 Highway 17
RR #1,
Deep River, ON
K0J 1P0
Office Hours: 8:30 to 4:30
Monday-Friday
Call: 613-584-3114
Fax: 613-584-3285



Happy New Year from the Mayor, Council and Staff

The Municipal office regular office hours are: Monday–Friday from 8:30 a.m. to 4:30 p.m.

The Town office will be closed for Family day on Monday February 20, 2017

JANUARY

Council Contacts

John (Jed) Reinwald Mayor	584-2497
Bruce Boucher Ward 1	586-2355
Anne Giardini Ward 2, Deputy Mayor	584-3981
Brenda Blimkie Ward 3	589-9696
John Hoyle Ward 4	589-2999

Departments

Town Office	584-3114
Public Works Department	584-3865
Building Department	584-4015
Pt. Alexander Library	584-2714
Chalk River Library	589-2966
North Renfrew Landfill	584-9194
Fire / Ambulance / OPP	911

What Happens to Your Recycling

We all know that waste has a huge negative impact on our natural environment but aside from that important environmental factor why should we recycle? It makes dollars and cents to recycle and with a little bit of effort our community wins.

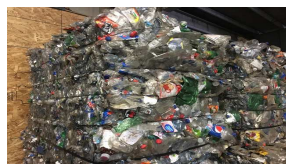
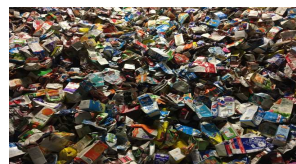
The amount of recyclable materials that is being thrown into the garbage instead of placed in blue boxes is going to result in our landfill being at capacity and having to close.

Then what? Apply for a new one? The Ministry has not approved one new landfill since 1999. This means that once we reach capacity our only option may be to ship our garbage to another Municipality or area that will accept it. That will cost all of us!!

It's your landfill and your garbage. Please help with diverting the recyclables.

The materials that you and your neighbours put out for recycling gets recycled again and again. By recycling, we give our landfill a longer life AND recycling reduces the need to use virgin raw materials. Here is some information explaining what happens to your recycling when it is brought to the depot. The Recycling is collected **Dual Stream** being: Fibre (Paper and Cardboard) and Containers. (Plastics, Tin Cans, Aluminum Cans, Glass, Milk Cartons)

The Fibre (Yellow box materials) is then sorted in to two products: a) Cardboard and b) Paper. The product is crushed and pressed into cubes and transported to manufacturers.



Your blue box materials are sorted into seven products. 1. Plastic Water Bottles (Recycling Symbol #1 PET meaning polyethylene terephthalate) 2. Plastic Detergent Bottles (Recycling Symbol #2 HDPE meaning High density polyethylene) 3. Plastic Other Recyclables, (including and not limited to Margarine and Yogurt Containers) (Recycling Symbol #3, #4, #5, #7) 4. Tin Cans 5. Aluminum Pop and Beer Cans 6. Glass and 7. Milk Cartons

The materials are shipped off to markets and processed into new materials. Some will be shredded / crushed, pelletized or spun into fibre. Then the product gets sold to manufacturers and turned into new products.

Recycled products can be remade into its original purpose (eg. Paper products, bottles, cans) or be transformed into products such as shelving and furniture. Some materials can only be repurposed so many times, while metals are limitless to the amount of times it can be re-made into products.

Committee Meeting Change

The January 3 Committee will be moved to [January 10, 2017](#). The Council meeting on January 18, 2017 will not change.

WINTER LENDING HUB



Did you know that Laurentian Hills residents can sign out

Nordic poles and snowshoes from the Town office? Those interested can fill out a waiver and sign out equipment. Hours are 8:30 a.m. to 4:30 p.m. Monday to Friday.

Let's Help Divert Recycling Materials from our Landfill

LIBRARY

Point Alexander Library

584-2714

Monday: 6:30-8:30 p.m.
Tuesday: 10-12 p.m. 1-3p.m.
Wednesday: 10 a.m. -12 p.m., 6:30-8:30 p.m.
Thursday: 10 a.m.-12 p.m. and 1-3
Saturday: 10 a.m. -12 p.m.
Closed: Fri, Sun & Holidays



Please let our office know if you have a P.O. Box # at the post office to ensure you receive your mail.

If caught illegally dumping garbage, you could face serious consequences.

HOURS

Chalk River Library

589-2966

Monday: 3-6 p.m.
Tuesday: 6-8 p.m.
Wednesday: 3-5 p.m.
Thursday: 1-4 p.m.
Saturday: 10 a.m. - 12 p.m.
Closed: Sun, Fri & Holidays



Be sure to have your Garbage curbside by 7:00 a.m. and Recycling curbside by 7:30 a.m.

Water Reports

All water reports from Ministry of the Environment and American Water are available on our website under Reports and are available in printed version at both Point Alexander Library and Chalk River Library.

Payment for Taxes and Water

Pre-Authorized, Cash, Cheque, On-line Banking (at participating banks), or at the Scotiabank Branch and Credit Union in Deep River. **Cheques** for taxes and water payments may be left in the night deposit box in Chalk River at 19 Railway or in Point Alexander 34465 Highway 17 at the main office. The Municipality **will not** be responsible for cash left in the drop box.

Recycling Calendars

Your **NEW** 2017/2018 recycling calendar will be available by February/March. If you do not receive one by mid March you may pick one up at the municipal office.



It's That Time of Year Again! Rink Volunteers Needed!

The Town of Laurentian Hills is looking for persons or groups interested in volunteering to help with shoveling, flooding and maintaining the outdoor rink surfaces. The outdoor rinks are located in Point Alexander, Chalk River and Mountain View Subdivision. If you are interested in volunteering at one of the locations, please call the Town office at (613) 584-3114.

Chalk River Lions Club Winter Carnival

February 3 to 5, 2017 Parade, Magic Show, Face Painting and Indoor/Outdoor activities. Please see the NRT for details regarding the carnival.

Recycling Or Garbage?

Recycling—BLUE Bin



Grocery bags, outer wrap from toilet paper/cases of water and paper towels (all in one bag and clean), Milk and juice cartons, Ice cream containers (rinsed and clean), Tin cans (place lid inside and pinch can so lid stays in, open and empty paint cans (no plastic with metal tops and/or bottoms or handles), Aluminum cans, pie plates, trays and foil wrap (no foil with paper or plastic laminate), Clear and coloured glass.

Recycling—YELLOW Bin



Newspaper, magazines, flyers, box-board/paperboard (cereal boxes—no wax bags) clean pizza boxes, egg cartons, toilet paper/paper towel rolls, office paper, cardboard (must be broken down into 2' x 2' bundled and tied), soft cover books and shredded paper.

GARBAGE



Small scrap metal. Dog/cat food bags, dirty pizza boxes, all colours of styrofoam, frozen juice cans, hard covered books, Tupperware, Rubbermaid, toys, bread bags, window pane glass, wood and wax boxes.

Aerosol Cans are Household Hazardous Waste.

www.laurentianhills.ca

Email:

info@laurentianhills.ca

Meetings (Council + Committee)

Protection to Persons & Property Committee, Planning Committee, Public Works Committee, Community & Social Services Committee, and Finance & Personnel Committee are the first Tuesday of each month at 7:00 p.m. **Council** - On the Wednesday 15 days after the first Tuesday of the month at 7:00 p.m. If you wish to address Council as a delegation, a written signed request must be submitted by noon the Thursday before the Council and Committees.

Water Sample Drop Off . . .

Water Sample Bottles are available at the municipal office in Point Alexander. Samples to be taken the **same day** as they are dropped off.

September to March → Drop off **Tuesday and Wednesday only**.

Don't Put Snow On Hydrants

Every second counts in a fire. Do not push snow onto hydrants in front of your home when clearing snow. It can make a huge difference in saving property and more importantly someone's life!



Keep Kids Safe

Please discourage children from playing on snow banks near the streets. Vehicles and plows may not see the children and may not be able to stop in time.

A Word from the Fire Chief and Firefighters

They would like to wish you a Fire Safe Holiday Season and would also would like to remind everyone that Christmas trees can quickly become a fire hazard if they are not watered regularly. Caution should always be exercised when candles are used, and candles should **never** be placed near a Christmas tree. Check your extension cords for frays or cracks and never run them under carpets. Survive the holidays, check your smoke/CO alarms, clean your chimneys regularly and plan your escape on a regular basis!