



Laurentian Hills Zoning By-Law Schedule 'A' Map 3 - McKay

Corporation of The
Town of Laurentian Hills

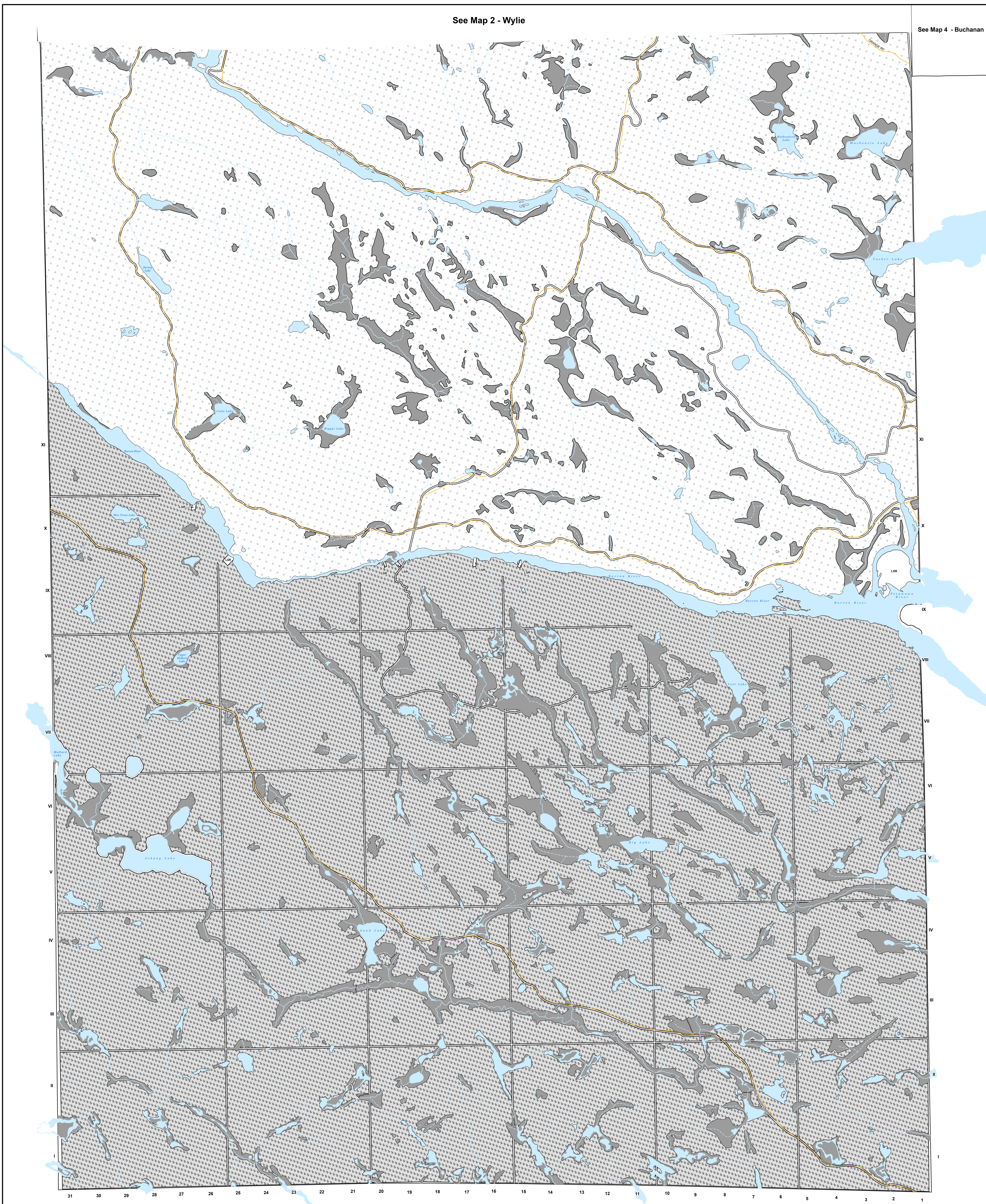
This is Schedule 'A' to the By-law Number _____
Passed the _____ day of _____ 20_____
Signatures of Signing Officers

Mayor _____

CAO/Clerk _____

See Map 2 - Wylie

See Map 4 - Buchanan



- TransCanada Pipelines Limited Pipeline
- Ottawa Valley Recreational Trail - Algonquin Trail
- County Road
- Municipal Maintained Road
- Municipal Seasonal Road
- Private Road
- Provincial Highway
- Intermittent Watercourse
- Permanent Watercourse
- ★ Waste Disposal Site - Active
- ★ Waste Disposal Site - Inactive
- Property Parcel
- At Capacity Lake
- CF - Community Facility
- CL - Crown Land
- DM - Disposal Industrial
- E - Exceptions
- EP - Environmental Protection Area
- FL - Federal Land
- GC - General Commercial
- GM - General Industrial
- HC - Highway Commercial
- LSR - Limited Service Residential
- LM - Light Industrial
- MP - Mineral Aggregate Pit
- MP-R - Mineral Aggregate Pit - Reserve
- MQ - Mineral Aggregate Quarry
- MHP - Mobile Home Park
- OS - Open Space
- R1 - Residential One
- R1 - No Service
- R1 - Partial Service
- R2 - Residential Two
- RR - Rural Residential
- RU - Rural
- TC - Tourist Commercial
- Separation Distances

- DM
- MP and MP-R
- MQ and MQ-R
- R1 - Residential One
- R1 - No Service
- R1 - Partial Service
- R2 - Residential Two
- RR - Rural Residential
- RU - Rural
- TC - Tourist Commercial

Zone	Feature	Required Minimum
DM	Waste Disposal Site	500 metres
MP and MP-R	Sand and Gravel Resource and Licensed Pit	300 metres
MQ and MQ-R	Bedrock Resource and Quarry	500 metres

