

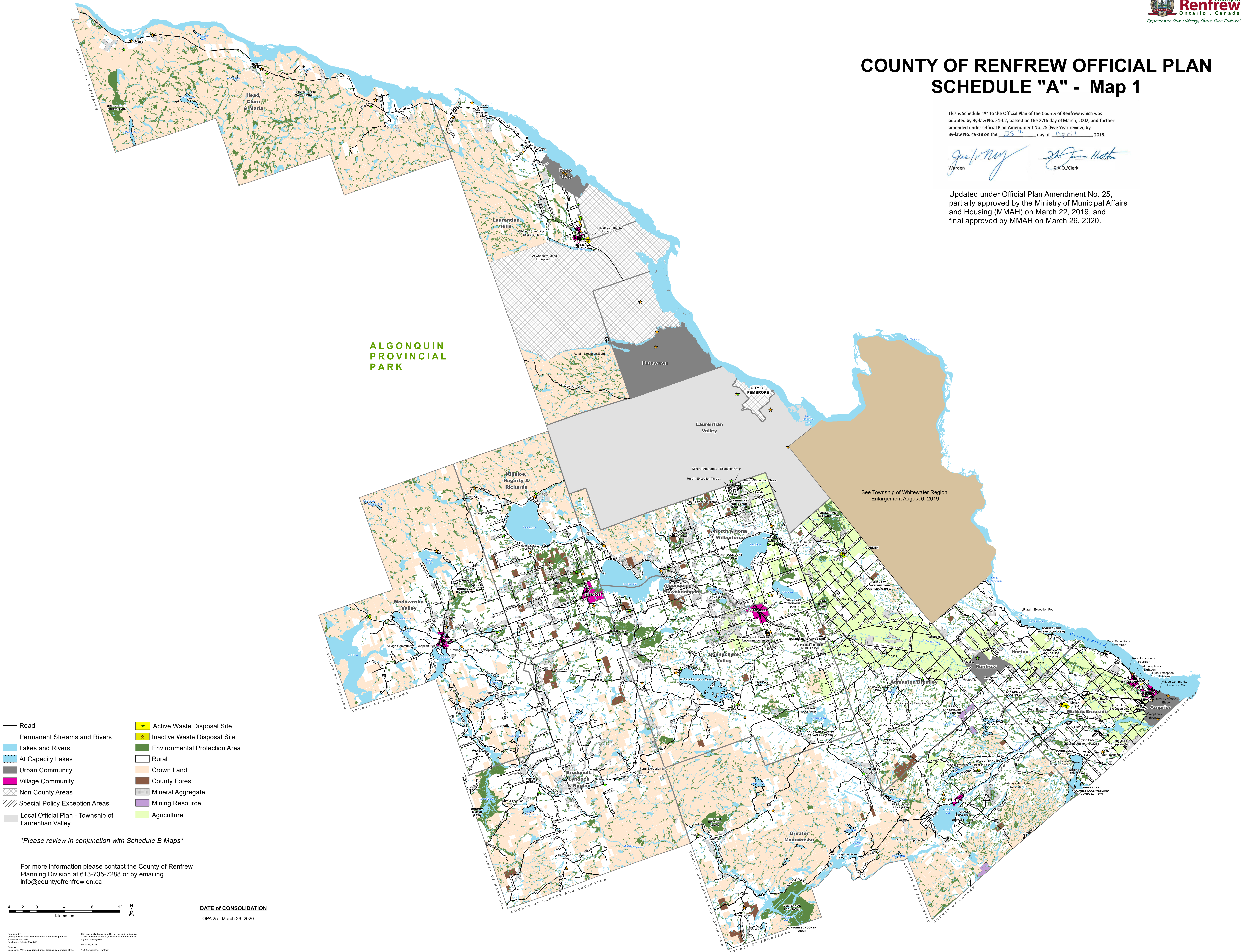
COUNTY OF RENFREW OFFICIAL PLAN SCHEDULE "A" - Map 1

This is Schedule "A" to the Official Plan of the County of Renfrew which was adopted by By-law No. 21-02, passed on the 27th day of March, 2002, and further amended under Official Plan Amendment No. 25 (Five Year Review) by By-law No. 49-18 on the 25th day of April, 2018.

Janet May Warden
John Huth C.A.O./Clerk

Updated under Official Plan Amendment No. 25, partially approved by the Ministry of Municipal Affairs and Housing (MMAH) on March 22, 2019, and final approved by MMAH on March 26, 2020.

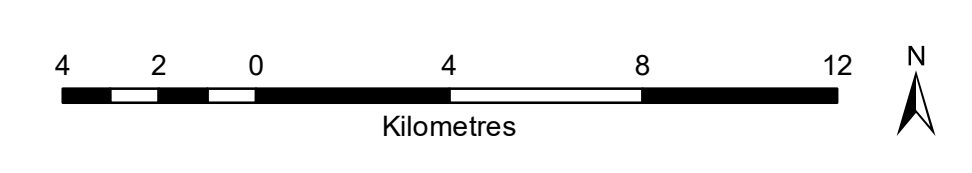
**ALGONQUIN
PROVINCIAL
PARK**



- Road
- Permanent Streams and Rivers
- Lakes and Rivers
- At Capacity Lakes
- Urban Community
- Village Community
- Non County Areas
- Special Policy Exception Areas
- Local Official Plan - Township of Laurentian Valley
- ★ Active Waste Disposal Site
- ★ Inactive Waste Disposal Site
- Environmental Protection Area
- Rural
- Crown Land
- County Forest
- Mineral Aggregate
- Mining Resource
- Agriculture

Please review in conjunction with Schedule B Maps

For more information please contact the County of Renfrew Planning Division at 613-735-7288 or by emailing info@countyofrenfrew.on.ca



DATE of CONSOLIDATION
OPA 25 - March 26, 2020

Produced by: County of Renfrew, Development and Property Department, Environmental Services, Planning, 100 Main St. West, Renfrew, Ontario K6A 6R6. Date: March 26, 2020. Source: Base Data: Web Data supplied under license by members of the Ontario Open Data Exchange & County of Renfrew. Projection: UTM NAD83 Zone 18. © 2020 County of Renfrew.